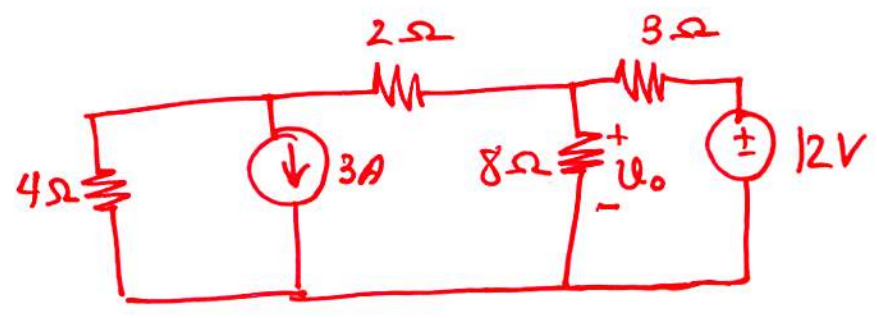
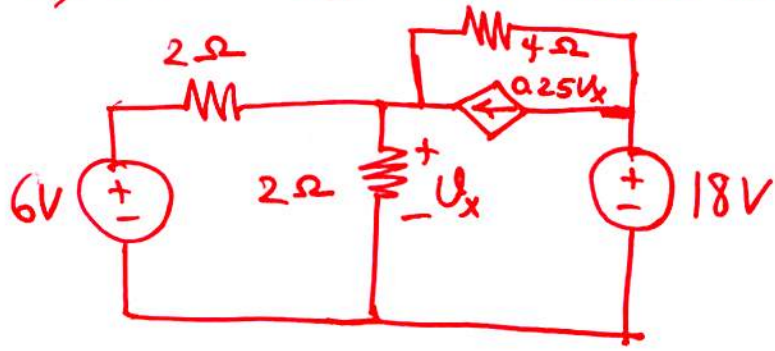


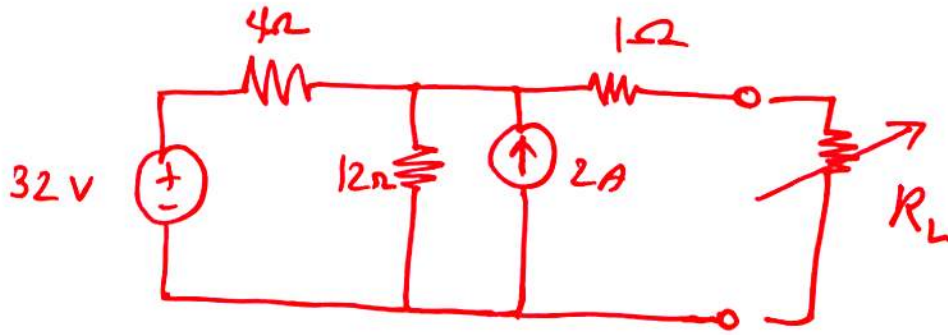
1) Use source transformation to find U_0 in the circuit



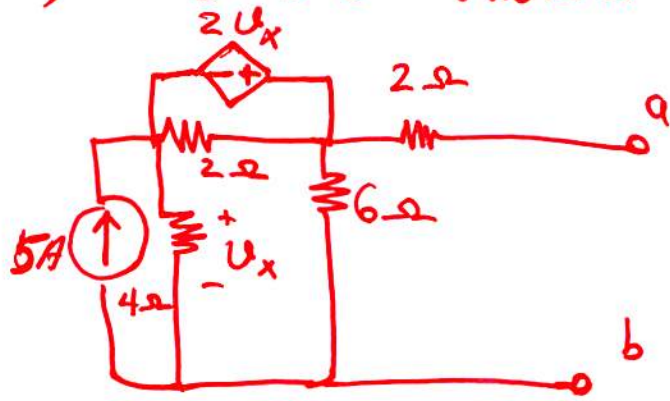
2) Find U_x via source transformation:



3) Find the Thevenin equivalent of the circuit below.
Find the current through $R_L = 6, 16, \& 36 \Omega$.



4) Find the Thevenin equivalent of the circuit below.



5) Det. the Thevenin equivalent of the circuit below:

