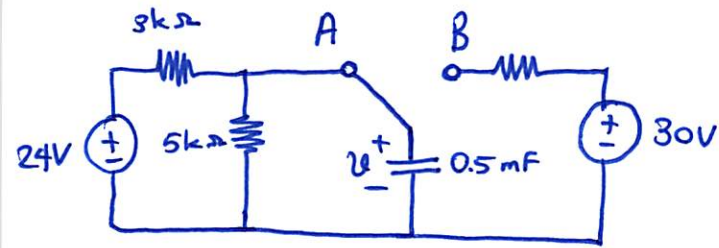
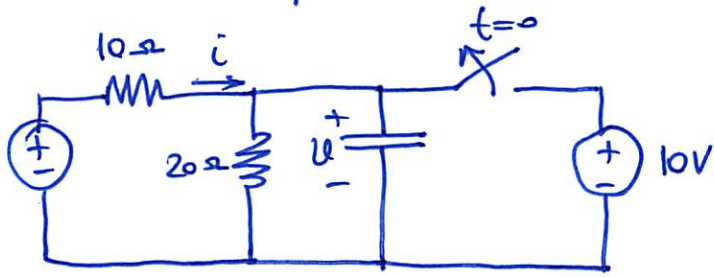


1) The switch has been in position A for a long time.

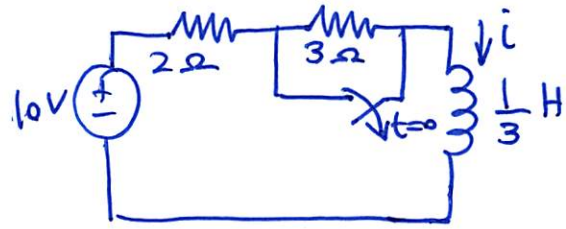
At $t=0$ the switch moves to B. Det. $u(t)$ for $t>0$ and calculate its value at $t=1\text{ s}$ & 4 s .



2) In the figure the switch has been closed for a long time & is opened at $t=0$. Find i & U for all time



3) Find $i(t)$ for $t > 0$. Assume that the switch has been closed for a long time



4) At $t=0$ switch 1 is closed & switch 2 is closed 4s later. Find $i(t)$ for $t > 0$. Calculate i for $t=2s$ & $t=5s$.

