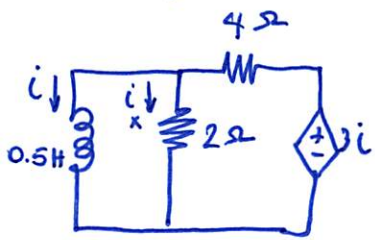
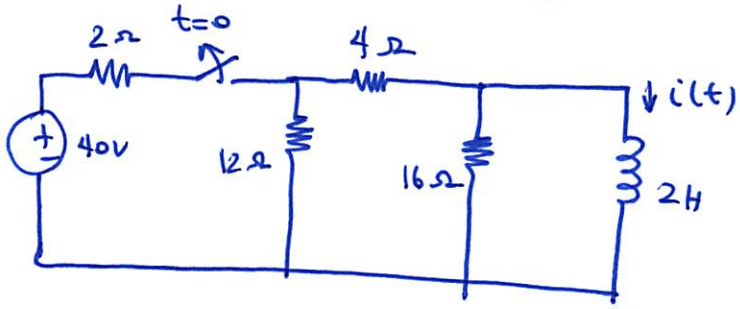


1) Assuming $i(0) = 10A$, calculate $i(t)$ & $i_x(t)$ in the circuit



2) The switch in the circuit has been closed for a long time. At $t=0$, the switch is opened. Calculate $i(t)$ for $t > 0$.



3) Find i_o , U_o , & i for all time, assuming that the switch was open for a long time.

