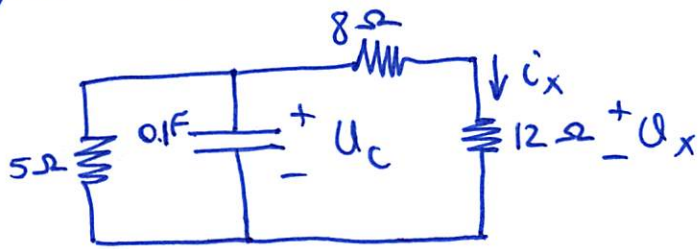
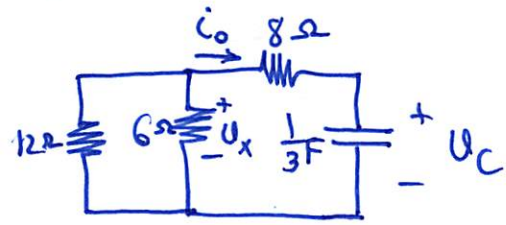


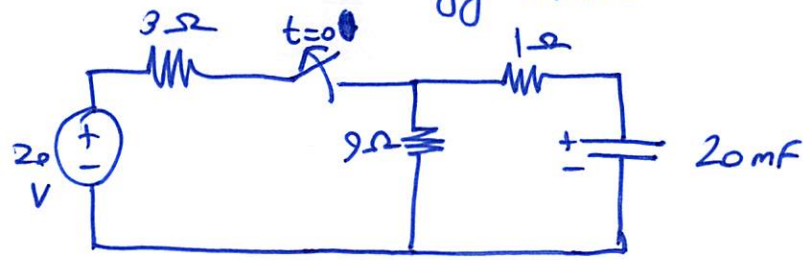
1) Let $V_C(0) = 15V$. Find U_C , U_x , and i_x for $t > 0$.



2) Let $U_C(0^-) = 60V$. Find U_C, U_x, i_0 for $t \geq 0$



3) Switch is opened at $t=0$. Find $i(t)$ for $t \geq 0$. Calculate the initial energy stored in the capacitor.



4) Switch opens at $t=0$. Find $i(t)$ for $t \geq 0$ & $w_C(0)$

